

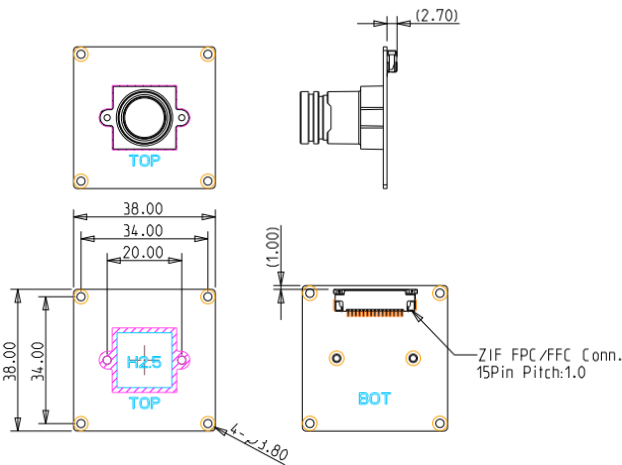
### Features

- Max. Resolution: 1920 x 1200 @ 60fps
- ISP inside, Global Shutter
- Platform Support: Nvidia Jetson Xavier NX/Nano
- Complies with CE/FCC Class A

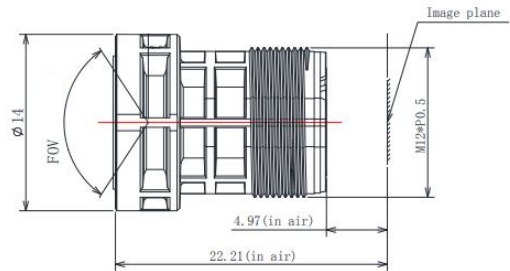
Resolution	FPS (MIPI 2 lanes)
1920 x 1200 (2.3MP)	60
1920 x 1080 (FHD)	60
1280 x 720 (HD)	120

### Mechanical Drawing

#### Mechanical Drawing



#### Lens Specification



Items	Specification
F no.	2.2
Focal length	3.89mm
Lens structure	1G3P
Mount	M12*P0.5

#### Headquarters (Taiwan)

5F., No. 237, Sec. 1, Datong Rd.,  
Xizhi Dist., New Taipei City 221,  
Taiwan  
Tel: +886-2-7703-3000  
Email: sales@innodisk.com

#### Branch Offices:

**USA**  
usasales@innodisk.com  
+1-510-770-9421

**Europe**  
eusales@innodisk.com  
+31-40-3045-400

**Japan**  
jpsales@innodisk.com  
+81-3-6667-0161

**China**  
sales\_cn@innodisk.com  
+86-755-2167-3689

#### www.innodisk.com

© 2019 Innodisk Corporation.  
All right reserved. Specifications  
are subject to change without  
prior notice.

March 1, 2023

### Specifications

Max. Resolution	1920 x 1200 (2.3MP) @ 60fps
Output I/F	MIPI 15pins (2 lanes)
Power Consumption	Approximate 1W
Dimension (LxWxH)	38 x 38 x 22mm
Operating Temp.	-30°C ~ +70°C (main chip spec.)
CMOS Sensor	Onsemi AR0234
Sensor Size	1/2.6"
Pixel Size	3um
Lens Type	Fixed focus (M12)
Lens D/H/V FOV	104°/86°/46°
Platform Support	Nvidia Jetson Xavier NX/Nano

### Order information

**EV2M-OOM1-UHCA-E2**  
MIPI Fixed Focus Camera Module  
**7W700000010**  
MIPI CSI-2 FFC cable,16cm,15pins pitch 1mm



Cable appearance

www.innodisk.com